

DRIVING FROM THE NORTH AND PARKING?

Turn left into the parking paddock from SH1 approx 300m south of Waipara River Bridge.

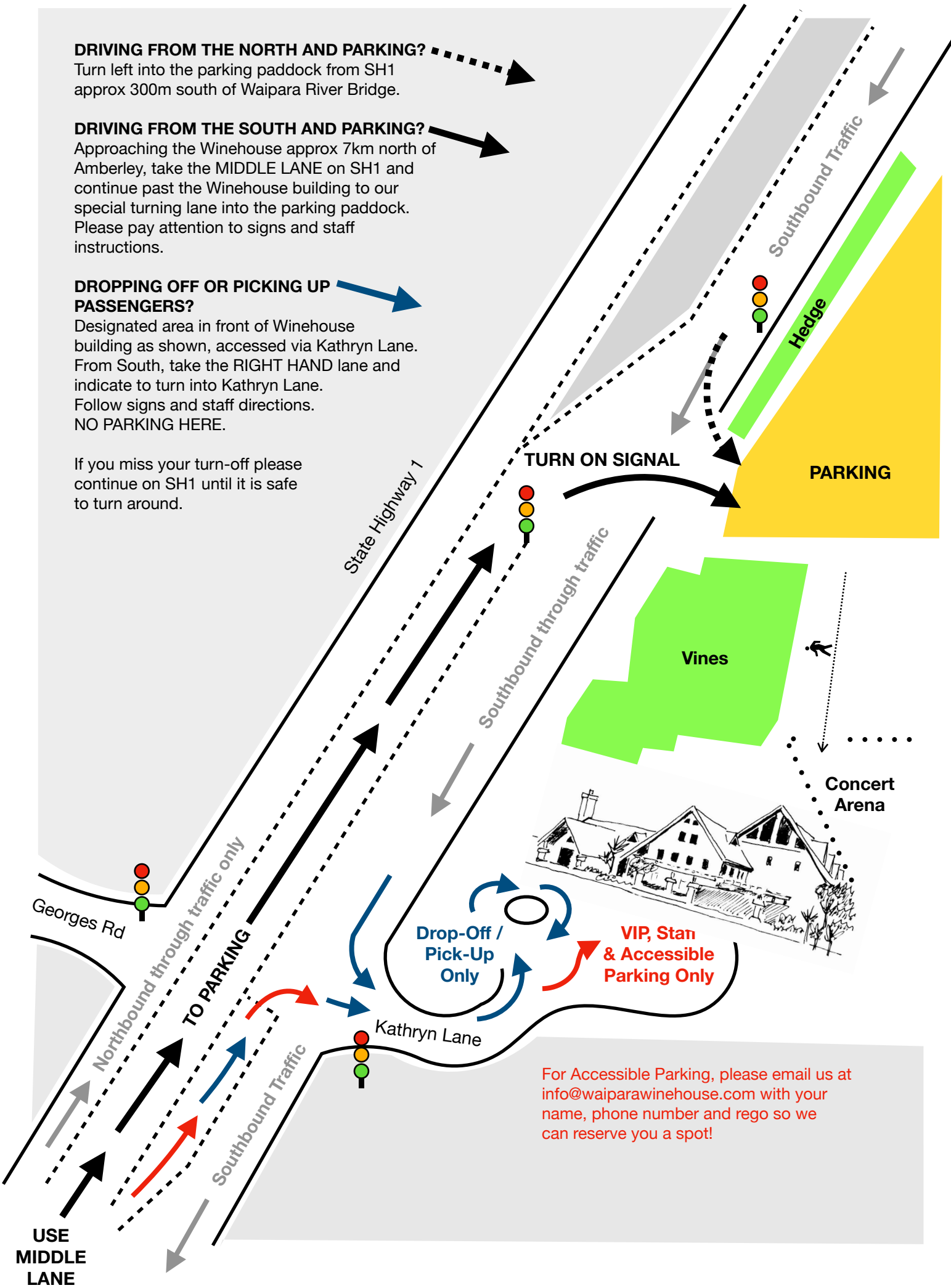
DRIVING FROM THE SOUTH AND PARKING?

Approaching the Winehouse approx 7km north of Amberley, take the MIDDLE LANE on SH1 and continue past the Winehouse building to our special turning lane into the parking paddock. Please pay attention to signs and staff instructions.

DROPPING OFF OR PICKING UP PASSENGERS?

Designated area in front of Winehouse building as shown, accessed via Kathryn Lane. From South, take the RIGHT HAND lane and indicate to turn into Kathryn Lane. Follow signs and staff directions. NO PARKING HERE.

If you miss your turn-off please continue on SH1 until it is safe to turn around.



For Accessible Parking, please email us at info@waiparawinehouse.com with your name, phone number and rego so we can reserve you a spot!